



PORTLAND'S *Rain* OF GLASS, INC.

A non-profit organization formed to stimulate interest in collectible glass and to provide educational resources and events for the members and the community at large.



FEBRUARY

WHERE: Friendship Masonic Center
5626 NE Alameda Street
Portland, Oregon 97213
N.E. 57th & Sandy

WHEN: Tuesday, February 20, 2007,
6:00 to 9:00 p.m.
(Library open at 6:00 p.m.)



GREETERS: Jeff Motsinger
And Rose Mary Joslin
(Come early to set up—6:00 p.m.)

SPECIAL: OPEN HOUSE!

Special Refreshments and Displays: *“Around the World – Glass Patterns named for Countries.”* From the Collections of Portland’s Rain of Glass Members and Guests.

PATTERN OF THE MONTH: Jeannette Glass Company’s FLORAGOLD “LOUISA” Pattern, presented by Diana Jones, PROG member

Pictured is a Floragold “Louisa” bowl produced by Jeannette Glass Company

REFRESHMENTS: Contact Michelle Kemp if you can help.

BOARD MEETING: Tuesday, February 13, at the Friendship Masonic Center, 7:00 p.m.
ALL MEMBERS WELCOME



UPCOMING EVENTS

FEBRUARY

- 3-4 – Palmer/Wirfs Puyalup Show
- 4 – Polk Flea Market, Rickreall
- 4 – Medford Flea Market
- 9-19 – Lincoln City Antique Week
- 10-11 – Ocean Shores Antique & Collectible Show, Ocean Shores, WA
- 11 – Salem Collectors Market
- 24 – Green River Glass Show and Sale, Kent, WA.
- 25 – Rose City Collectors Market, Portland

MARCH

- 3-4 – EXPO, Palmer/Wirfs Show, Portland
- 4 – Picc-A-Dilly, Eugene
- 16-18 – Medford Antique Show
- 18 – Salem Collectors Market
- 18 – Picc-A-Dilly, Eugene

Visit the Portland’s Rain of Glass Website for more interesting Club news:
www.rainofglass.com

Mailing Address:
Portland’s Rain of Glass
C/O Friendship Masonic Center, 5626 N.E. Alameda Street, Portland, OR, 97213

Membership in Portland's Rain of Glass:

\$22.00 for Individual, \$8.00 for each additional member at same address.

Your newsletter mailing label tells the date your membership expires. You may pay on or before that date. You may pay at Board or General Meetings. No dues will be processed during the Show and Sale or at Rally. You may use Glass Bucks to pay for membership.

You may also mail dues to:

Cindy Thomas
Membership Chairman
795 Corby St.
Woodburn, OR 97071
or Friendship Masonic Center
5626 NE Alameda
Portland, OR 97213

Each member receives a receipt, membership card and library card and monthly newsletter as well as other membership benefits.

We appreciate each and every member. Our members make this organization strong. If you would like to share your talents, please contact any Board Member or Committee Chair.

Portland's Rain of Glass, Inc.

publishes 12 newsletters a year.

If you would like to contribute an article, contact:

Barbara Coleman at 503-281-1823,
colelee@easystreet.com

AND Jewell Gowan at 503-510-9137,
jewellsbks@aol.com

AND Cindy Thomas at 503-981-8330,
cst@wbcable.net

PRESIDENT'S REPORT

Wasn't January's General Meeting fabulous? Uh, January's meeting? Well, no actually. We didn't have a January meeting. The 16th of January will live in infamy as the day that 4 inches of snow closed down Portland (my family members in the Mid-West just howl when they hear stories like this). Several of us Board members organized a last-minute impromptu phone tree/email web to tell people not to even attempt coming to the Center. We did our best but some of you may have fallen through the cracks and not gotten notified. I sincerely apologize if anyone braved the elements only to arrive at a boarded up and darkened Friendship Center. We did manage to get a closure notice on our website, however. And thank you Mark Moore for getting to that. Obviously, we need a plan to better handle notification for emergency closures. One of the best ideas to handle this is quite simple though: if there is any question if we will be having a meeting or not, just check our website. The Board will be discussing other alternatives at the February Board Meeting.

Thanks to all for your efforts in January at the Library exhibit and the Hillsboro show. A special thanks to Carol White for her tireless efforts as Show Chair and as the organizer of the Library exhibit.

Pending any freak snowstorms or other natural disaster, I will see you all at our February meeting...
JACK



LIBRARY CORNER

Special Request from Kate Fuller, Librarian:

I'm getting ready to do the library inventory and would like to ask members who have books out--especially books that have been out for several months or longer--to please make a special effort to bring them to the next meeting. It will help make the inventory as accurate as possible and make the job a bit easier. If people have questions they can call me. Kate Fuller (503) 288-8052.

Thanks.

The show was great and the club booth looked especially nice I thought. Thanks for all the work.

TOP TEN ETCHED CRYSTAL PATTERNS

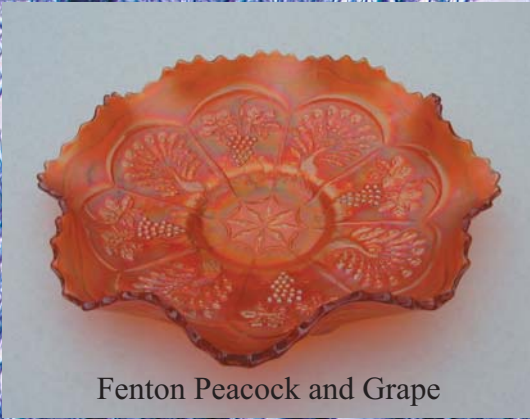
Replacements Limited reports that its most recent "Top 10" list of etched crystal patterns is made up exclusively of American manufacturers. That exclusivity is a departure from their earlier lists.

Here are the "Top Ten"

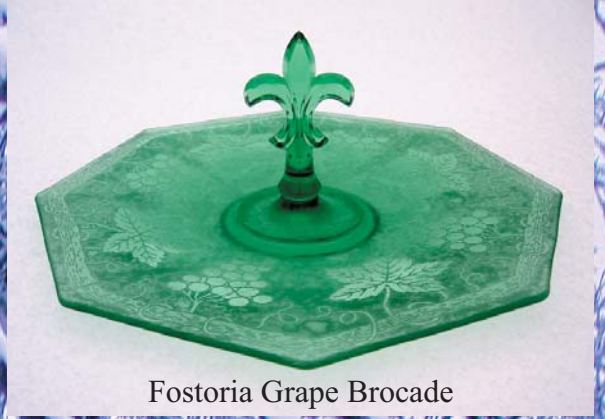
- #1 Rosepoint (Stem 3121) by Cambridge (1931 - 58)
- #2 Chintz by Fostoria (1940 - 73)
- #3 Orchid by Heisey (1940 - 57)
- #4 Navarre by Lenox (1982 0 92) - yes, by Lenox!
- #5 Meadow Rose by Fostoria (1936 - 75)
- #6 Heisey Rose by Heisey (1949 - 57)
- #7 June Night by Tiffin (1941 - 66)
- #8 Rosepoint (stem 3500) by Cambridge (1935 - 58)
- #9 Corsage by Fostoria (1935 - 39)
- #10 Minuet by Heisey (1939 - 56)

Submitted by Sandra Millius, ISA AM

Look what Neal Skibinski's camera found in the snow!



Fenton Peacock and Grape



Fostoria Grape Brocade



Ittala vase from Finland



Fostoria Acanthus



Blenko



Wheelers and Dealers at the Hillsboro Show!



Photos by Neal Skibinski



PROG Member Displays

RALLY SPEAKER: *Walt Lemiski*

Now that the January Show at the Fairplex in Hillsboro and the display at the Multnomah County Library in Portland are over, we must start thinking of the Open House at the February meeting and the Collector's Glass Rally in June.

Each month we will be featuring one or more of the 2007 Rally speakers. The first is a Bio on Walt Lemiski from the Ontario, Canada area. Walt will be our 'out-of-the-area' speaker for this year. On Friday, June 29 he will be presenting "Smoking Accessories in Glass" and on Saturday, June 30 his subject will be "Vintage Glass Barware".

Walter Lemiski is the Director of the Canadian Depression Glass Association. Formed thirty years ago, the CDGA has members from coast to coast who are "Preservationists of Depression Era Glassware." Walt publishes bi-monthly the Canadian Depression Glass Review. Walt also runs Waltz Time Antiques, displaying vintage glassware in Shakespeare, Ontario, and promotes The Vintage Glass Show & Sale in Mississauga, Ontario, Canada. His latest book "Glass Barware: Deco & Beyond" (2006) features barware from the roaring twenties through to retro 60s glassware. An authority on early Canadian Cornflower cut glass, his definitive book "Elegant Glass with Cornflower" was published by Schiffer Books in 2005.

Over a span of five years Walt helped build and classify the glass collection of the Dufferin County Museum. He also provided all the glass identifications and a chapter for the museum's book "Cornflower: Creatively Canadian." Walt has lectured about glassware for such groups as the Canadian Collectors Association, Glassfax Canada, the National Imperial Glass Collectors Club, and the West Virginia Museum of American Glass. He has also written for many antique trade journals on topics ranging from barware, Carnival and Depression Glass to calling cards, refrigerators and sheet music.

In his other life, Walt has collected a handful of music degrees in piano and voice, and a Masters in Music Criticism (specializing in the music reviews of George Bernard Shaw). Walt is a music adjudicator, educator, performer, and writer who has worked with numerous arts groups including the Royal Winnipeg Ballet and the Toronto Symphony Orchestra. He lives with his fellow collectors, wife Kimberley and son Nicolas, plus McDuff, a White West Highland Terrier.

by Jewell Gowan

More PROG Member Displays



Photos by Neal Skibinski

